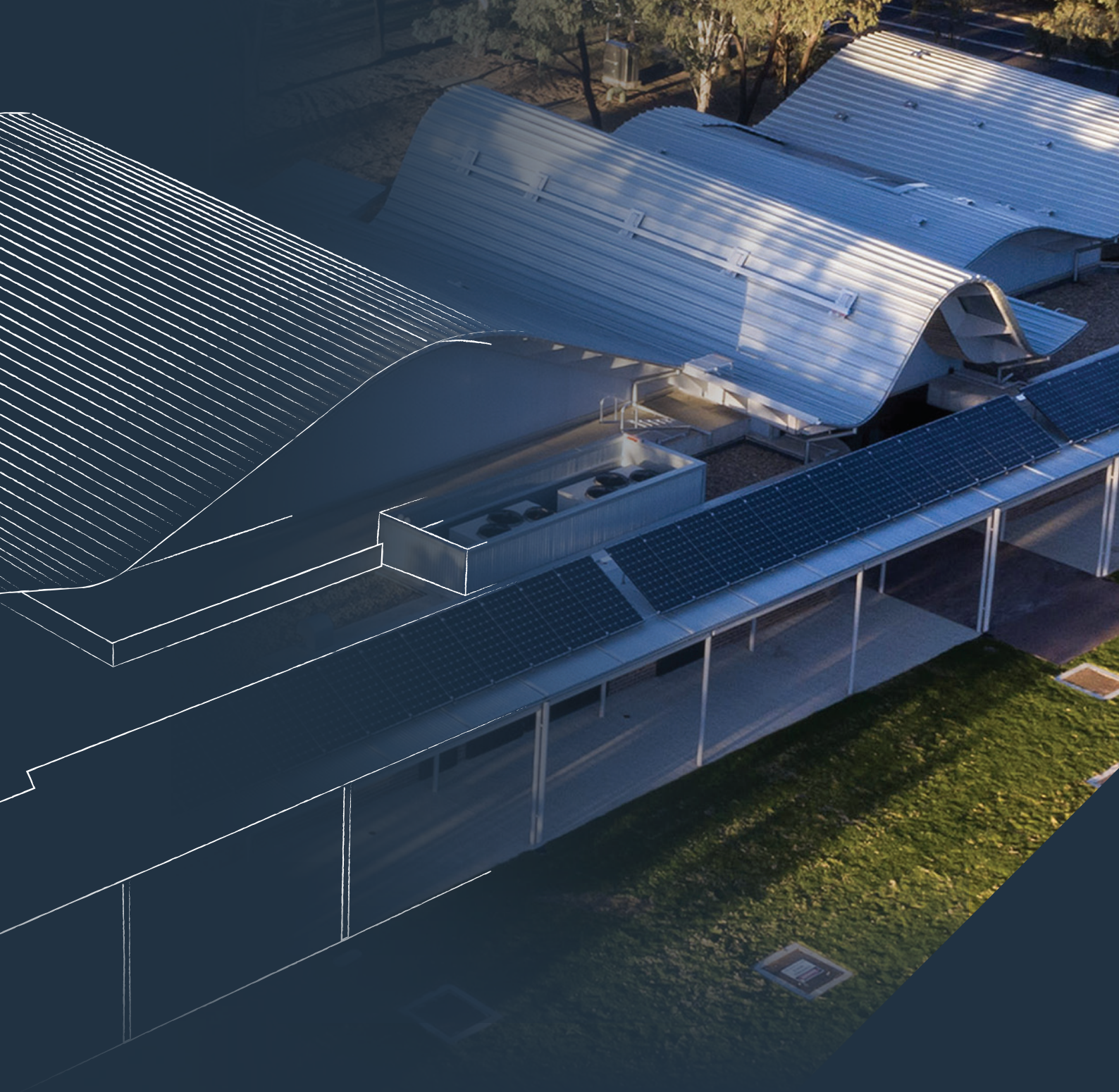


FREEFORM

ROOF & WALL SYSTEM



fielders.com.au





FreeForm™ – design flexibility, functionality and stunning aesthetics in one

A member of the ‘standing-seam’ family of architectural roof cladding, FreeForm™ combines an aesthetically pleasing profile with impressive curving and tapering capabilities, to deliver a bold look that offers outstanding functionality.

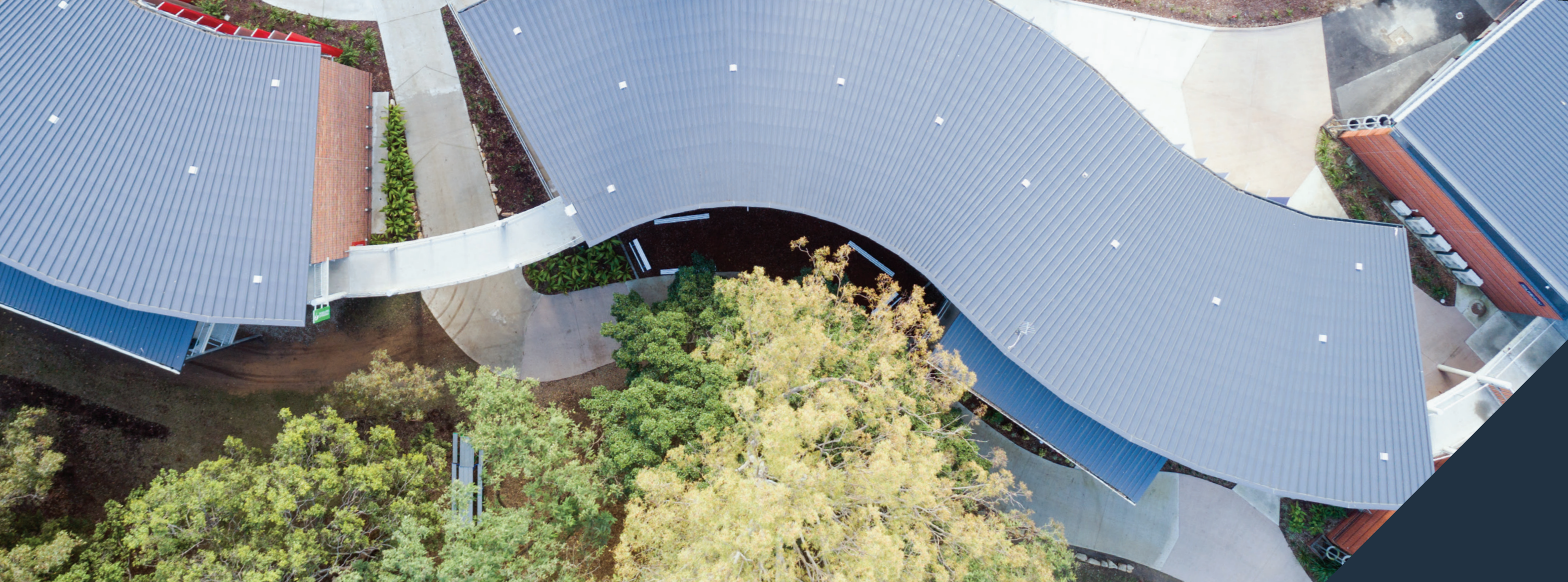
Along with enabling striking design, FreeForm™ is extremely strong and capable of meeting the most demanding structural and architectural requirements.

Architects and engineers will appreciate the design flexibility that FreeForm™ delivers across a wide range of applications – it’s suitable for use in standard purlin construction (single skin roof applications, such as sheeting to purlin with no ceiling), for vertical walls, on conical tapered roof profiles, as well as in built up roof systems.

FreeForm™ will accommodate the most complex roof configurations including curved surfaces, allowing smooth transitions between roof planes and between the roof and other building elements. A variety of end panels and ridge covers cap off the most complex roof design.

Adding to its appeal is FreeForm™ is available in both COLORBOND® steel and aluminium finishes, and for further flexibility, Fielders can manufacture onsite to any length using our mobile rollforming capability!

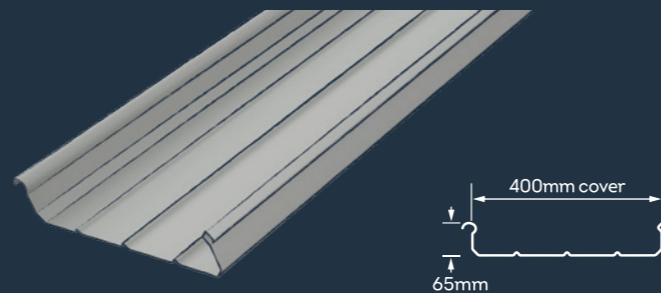




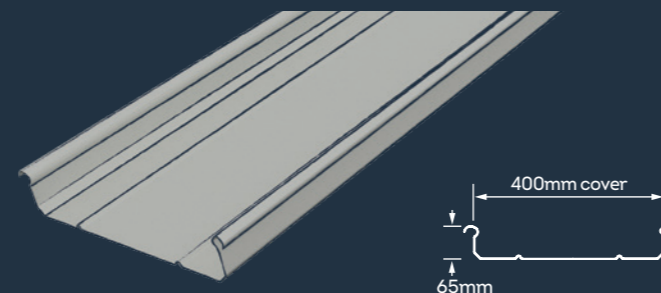
Key Features:

- Standard Cover Width: 400mm
- Tapered options of 220mm to 400mm profile widths
- A capillary groove on the male rib prevents siphoning action, and with the addition of the mechanical zipper provides an impenetrable barrier against rain, wind, snow, and ice.
- Fielders' unique and extensive Concealed Watertight Installation Guarantee (WIG) is available for FreeForm™2.

FreeForm™ 3 Swage



FreeForm™ 2 Swage



Manufacturing

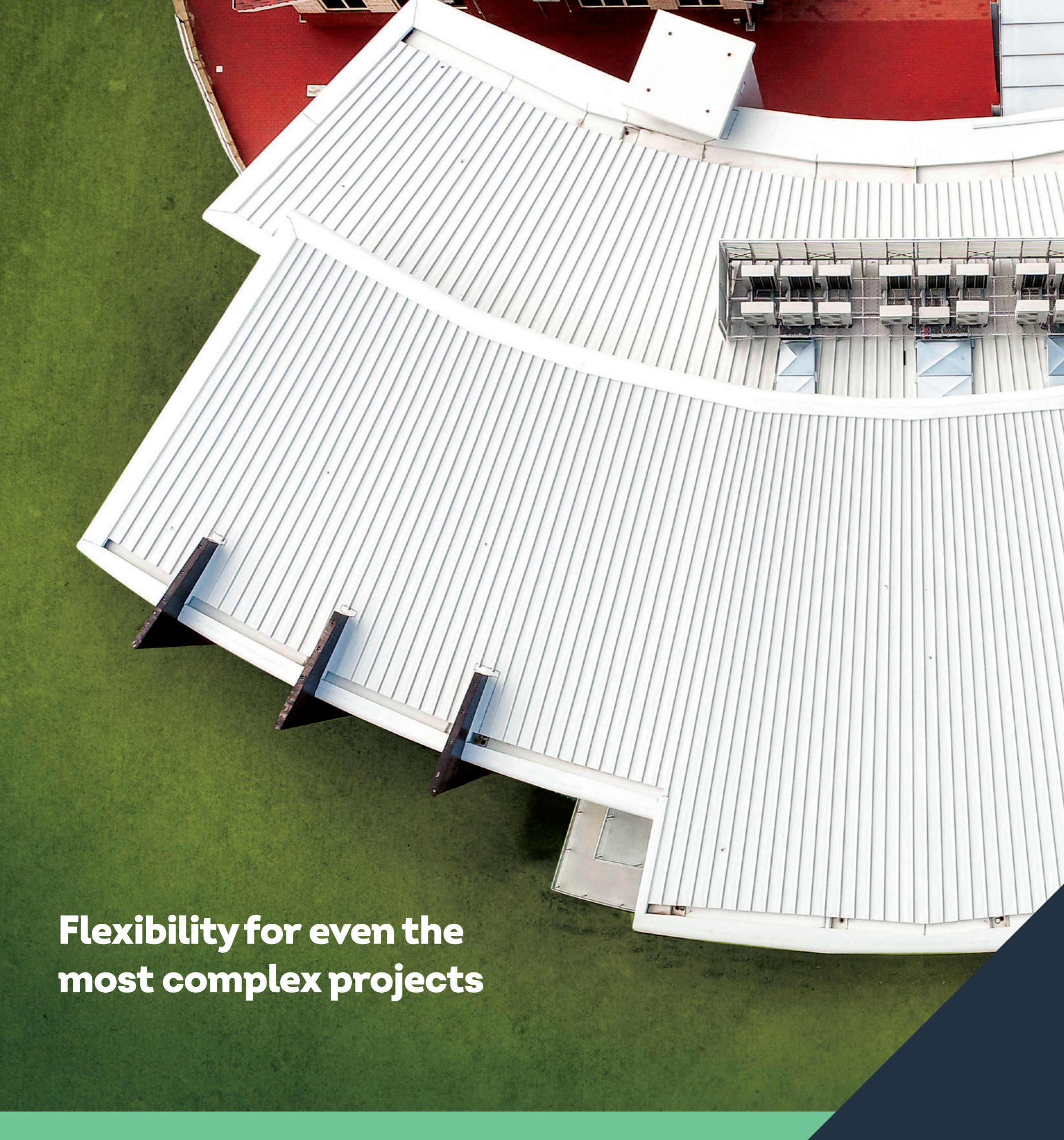
- Available ex-factory in lengths up to 30m³
- Can also be manufactured on site as a full-length ridge-to-eave sheet to a maximum length of 150m, eliminating end laps and joins⁴
- Even greater on-site flexibility with manufacturing equipment that can either be set at ground or roof level

Pitch

- 1.5 degrees for roof sheets without end-lap
- 3 degrees for roof length with end-lap

Availability

- Available nationally



Flexibility for even the most complex projects

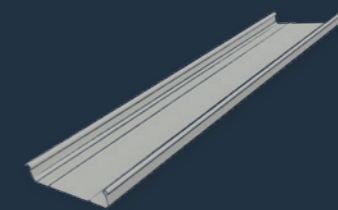
Curving

- Can be sprung curved (naturally curved) to a maximum limit of 80m radii
- Can be mechanically curved via a smooth curve machine to radii of 20m⁵
- Suitable for mechanical curving via a crimped/ cranked curved machine to radii of 2m⁵ (limited to a 'bullnose' type roof)

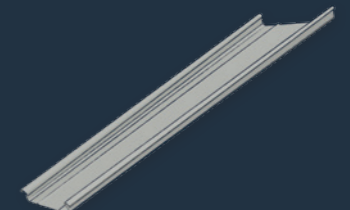
Tapering

- Can be tapered for conical or other roof surfaces

Straight



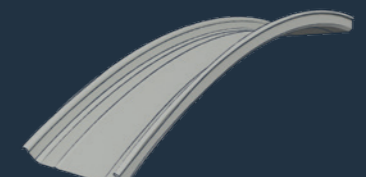
Tapered



Tapered-Convex Curved



Convex Curved



Tapered-Concave Curved



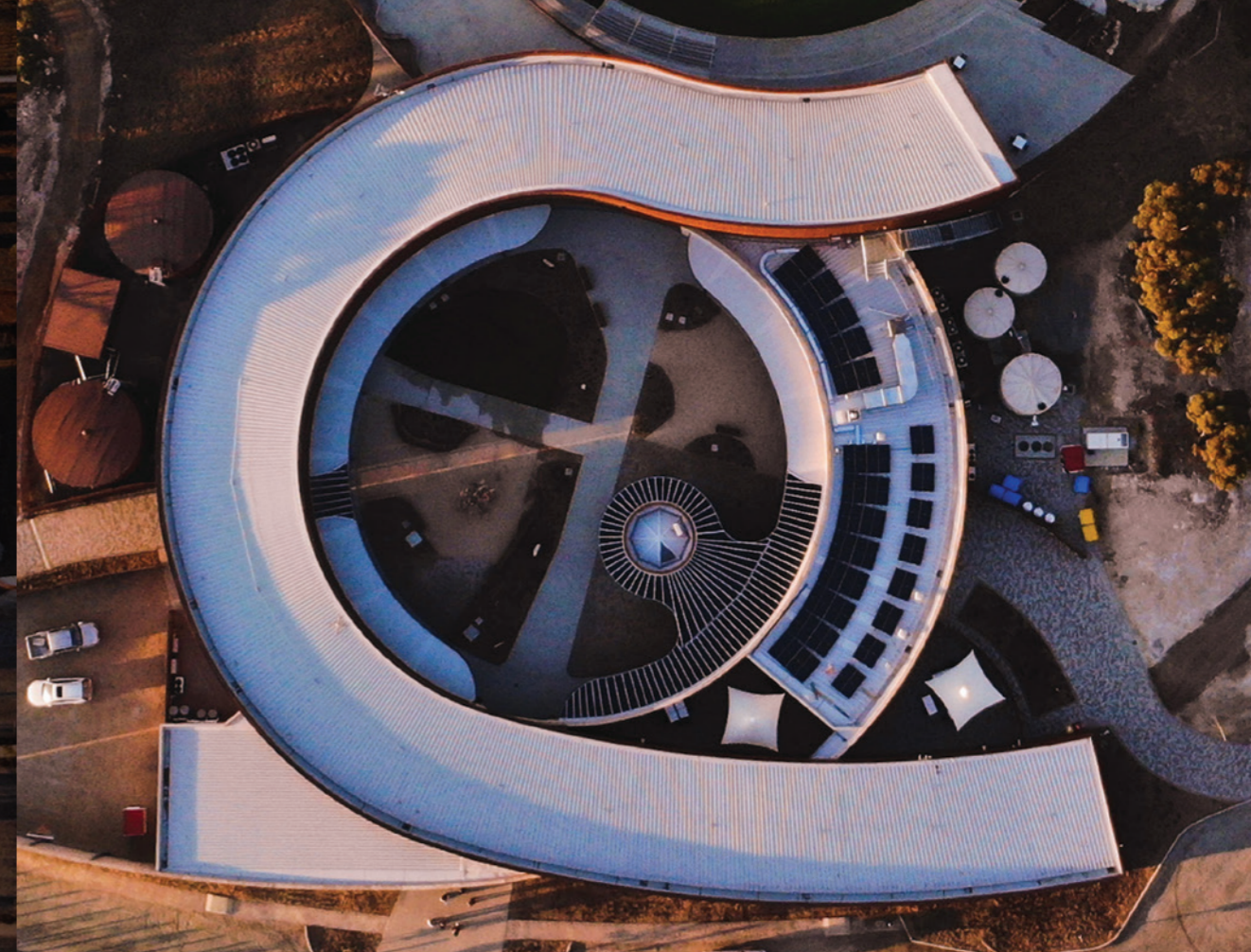
Concave Curved



Monarto Safari Park Visitor Centre

Location: Monarto, SA
Architect: Intro Architecture | Studio Gram

Roof structures that feature a radius can be extremely challenging to build, with suitable construction materials that can reliably and economically form these dramatic shapes being few and far between. FreeForm™ was an excellent fit for this challenge at Monarto Safari Park Visitor Centre. Approximately 1700m² of FreeForm™ in COLORBOND® steel colour Shale Grey™ were used along with other Fielders' products including S-Rib™ corrugated cladding.



My State Bank Arena – Derwent Entertainment Centre

Location: Glenorchy, TAS
Builder: VOS Construction

The My State Bank Area, formerly the Derwent Entertainment Centre, underwent redevelopment to enhance its functionality and aesthetic appeal. A key feature of the renovated stadium is its distinctive façade. To give the stadium a unique and locally-inspired appearance Fielders FreeForm™ was chosen to deliver a design that incorporates overlapping arches and shadows reminiscent of Hobart's nearby hilly landscape.



Emmanuel Catholic College

Location: Success, Western Australia
Architect: EIW Architects

Emmanuel Catholic College south of Fremantle recently saw the completion of a new two-story pavilion that houses a state-of-the-art English, arts and media block. Highlighted by a multilevel, curved roof, Fielders' FreeForm™ was the preferred cladding owing to its beautiful standing seam aesthetic and its capability to curve and taper to suit the fan-shaped structure. Onsite rollforming also allowed for 15m sheets to be manufactured eliminating the need for roof joints while expediting the construction process.



Woodcroft Community Centre

Location: Woodcroft, NSW
Architect: Carter Williamson

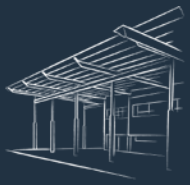
The striking undulating roofline of the Woodcroft Neighbourhood Centre was designed to reflect and accommodate the building's differing internal volumes, which range from one-on-one meeting rooms and offices, through to spaces that allows hundreds to gather. The versatility of Fielders FreeForm™ comes to the fore on this project, with its practicality and aesthetics complementing other materials used on the build, including white opalescent polycarbonate panel façade, quality brickwork and warm timber highlights.



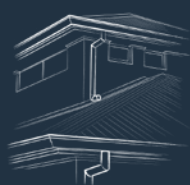
Photographer - Ben Guthrie, The Guthrie Project



Fielders' Product Range



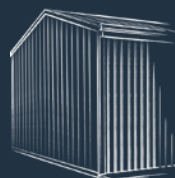
**Roofing
and Walling**



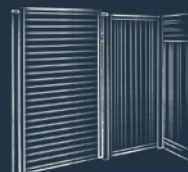
**Gutters, Fascia
and Rainwater
Goods**



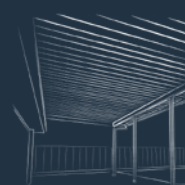
**Flooring and
Formwork**



Sheds



Fencing



**Patios and
Carports**

fielders.com.au

FOR SALES AND TECHNICAL ENQUIRIES CALL 1800 182 255

Product descriptions

All descriptions, specifications, illustrations, drawings, data, dimensions, and weights contained in this publication and websites containing information from Fielders are approximations only. They are intended by Fielders to be a general description for information and identification purposes and do not create a sale by description. Fielders reserves the right at any time to:

- a) Supply goods with such minor modifications from its drawings and specifications as it sees fit, and
- b) Alter specifications shown in its publications and websites to reflect changes made after the date of publication.

¹ Subject to site access and project suitability requirements.

² 20-year Concealed WIG subject to application, terms and conditions.

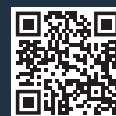
³ Maximum length is subject to transportation limitations.

⁴ Maximum length is site dependant.

⁵ Mechanical curving is only available upon request; lead times also apply - please speak to your local Fielders representative for further information.

Front Cover - Photography credit - Ben Guthrie, The Guthrie Project

COLORBOND®, Fielders® and ® product names are registered trademarks of BlueScope Steel Limited and ™ product names are trademarks of BlueScope Steel Limited. © 2024 BlueScope Steel Limited. ABN 16 000 011 058. All rights reserved. FIE0148 - 03/24



Scan the QR code to access more inspiration and product information on fielders.com.au

